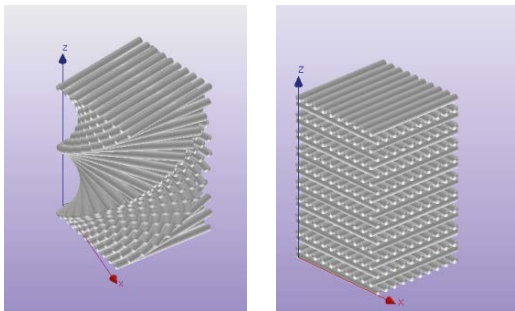
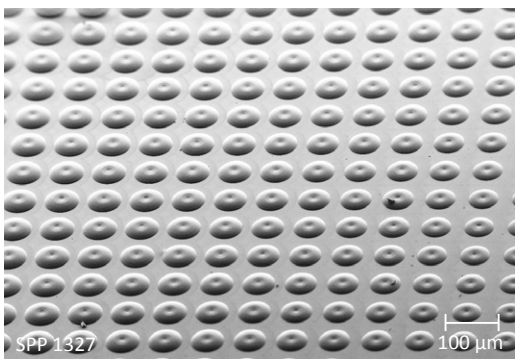


The LithoProf3D equipment is designed for materials development, the fabrication of photonic elements such as optical waveguides, microlenses, or diffractive optical elements, mask fabrication for NIL, and the fabrication of 3D structures for biomedical applications. The LithoProf3D platform features automated processes, adjustable footprint, application-specific laser power and wavelengths, and extremely high-precision positioning capabilities. The flexible software package meets the most demanding requirements, and it is available for standard 3D structuring jobs and sophisticated work flows with selectable exposure strategies – 3D printing from the sub-100 nm to the cm scale with highest precision.

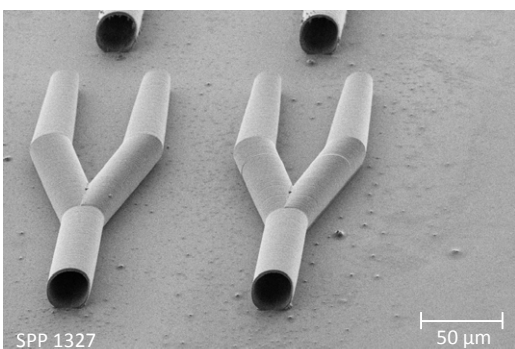


**Our customers benefit**

- Standard or custom 3D Printing Equipment (laser class 1)
- Additive and subtractive working mode in one machine
- Choice of operation mode with easy switching between the different modes
- Selectable footprint
- Scalable process technology
- Process material choice not limited



Specific customer requirements are addressed by our highly creative and motivated engineering team. We support our customers with our materials and process know-how, optical design and packaging, process and product development.



Multiphoton Optics GmbH – Friedrich-Bergius-Ring 15 – 97076 Würzburg – Germany

info@multiphoton.de – www.multiphoton.de

Place of Business: Würzburg – Registration Court: Würzburg HRB 12802 – VAT DE292175161

マルチフォトン オプティクス – Dr. グランラート ロレンツ – 東京都港区赤坂7-6-26 – 〒107-0052 – 日本 – lorenz.granrath@multiphoton.de